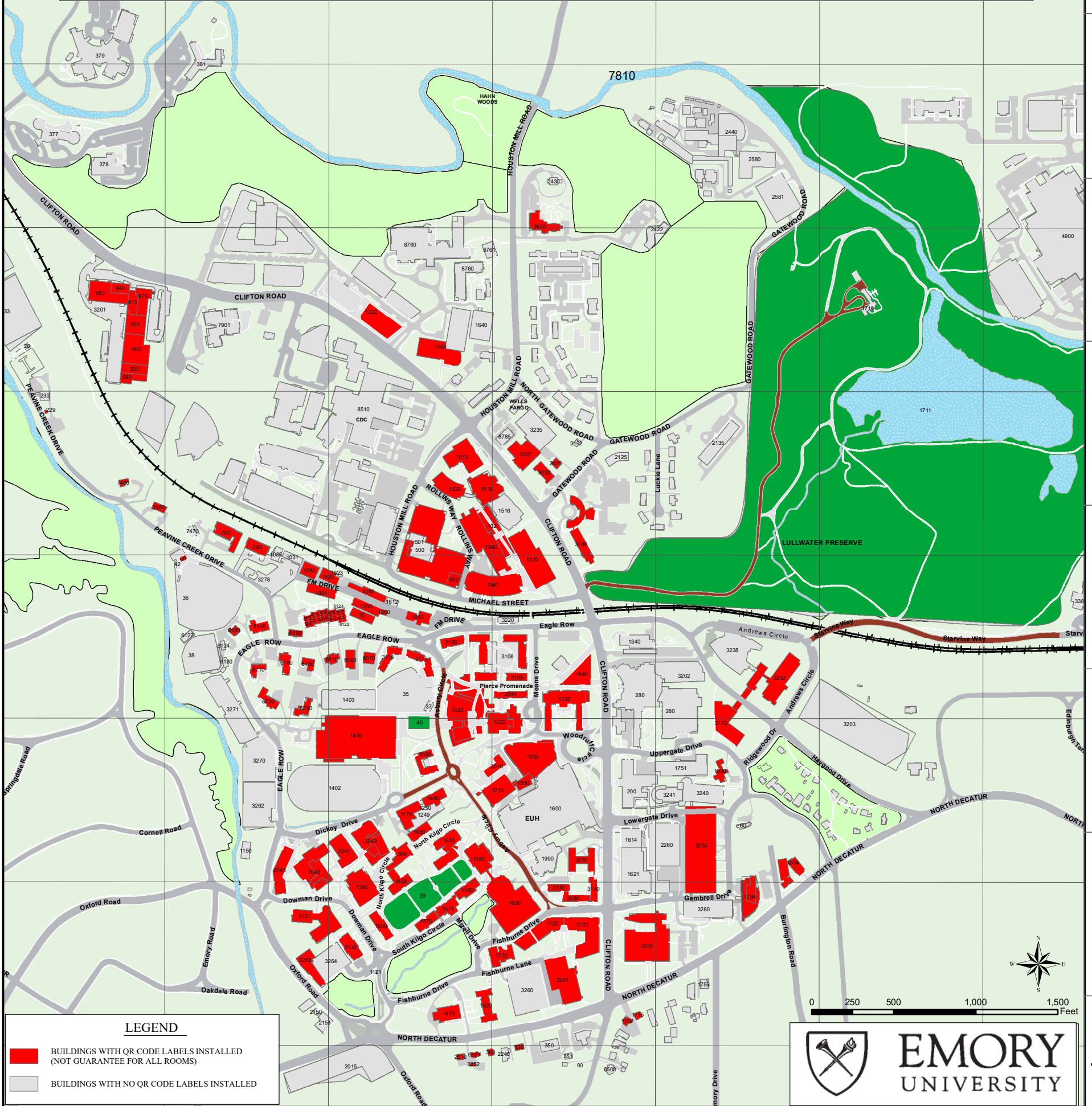


# ATLANTA CAMPUS BUILDINGS WITH QR CODE LABEL MAP



BLDG	BUILDING DESCRIPTION	GRID CODE
28	KAMINSKY PARK FIELDHOUSE	E5
29	QUADRANGLE	G9
33	MICHAEL KAMINSKY INTRAMURAL PARK	E5
35	MCDONOUGH FIELD	F7
36	CHAPPELL PARK	G7
37	MCDONOUGH FIELD STAGE	G7
38	SOFTBALL FIELD (COOPER)	F7
39	CHAPPELL PARK FIELD HOUSE	F7
42	CHAPPELL PARK LOCKER ROOM	F7
45	MCDONOUGH PLAZA	G8
60	THE 2012 HOUSE	I8
70	FM BLDG - A (ADMIN)	G7
102	BIOCHEMISTRY CONNECTOR	G6
130	1655 N. DECATUR	H10
153	BRIDGE ON MIZELL DRIVE	G9
200	EMORY CLINIC BUILDING - A	H8
229	MICHAEL KAMINSKY INTRAMURAL PARK RSRTM	E6
230	RECYCLING OPERATIONS	E6
280	CHOA IN CLIFTON	H7
290	PEAVINE DAR FACILITY	F6
350	GLENN MEMORIAL YOUTH BUILDING	H9
351	GLENN BOYSCOUT BUILDING	H9
360	1641 N. DECATUR	G10
376	WESLEY WOODS ADMIN	D3
377	WESLEY WOODS TOWERS	E4
378	WESLEY WOODS BUDD TERRACE	E4
379	WESLEY WOODS GERIATRIC HOSP	E3
381	WESLEY WOODS HEALTH CNTR	F3
500	MICHAEL STREET PARKING DECK	G6
501	MICHAEL STREET CHILLER PLANT	G7
502	BIOLOGY GREENHOUSE	G7
700	VISUAL ARTS	F6
800	CANNON CHAPEL	G8
900	1762 CLIFTON ROAD SUITE 900	E5
910	1762 CLIFTON ROAD SUITE 910	E5
920	1762 CLIFTON ROAD SUITE 920	E5
930	1762 CLIFTON ROAD SUITE 930	E5
940	1762 CLIFTON ROAD SUITE 940	E5
950	1762 CLIFTON ROAD SUITE 950	E5
970	1762 CLIFTON ROAD SUITE 970	E5
990	1762 CLIFTON ROAD SUITE 990	E5
1000	UNIVERSITY ADMINISTRATION	G9
1020	JAMES B. WILLIAMS MEDICAL EDUCATION BLDG	H7
1022	ALUMNI MEMORIAL UNIVERSITY CTR. (AMUC)	H7
1028	EMORY STUDENT CENTER	G7
1031	EHSO WAREHOUSE	F7
1081	FM BLDG - C (CP - PM&C)	F7
1082	FM BLDG - D (AUX SRVCS)	F7
1083	FM BLDG - F (NORTH SHOP)	G7
1085	EMORY WATER HUB	G7
1121	EMORY VISITOR INFORMATION BOOTH	G9
1130	BOISFEUILLET JONES CENTER	G9
1131	MATHEMATICS AND SCIENCE CENTER	F9
1150	EMORY ELECT SUB-STATION	F8
1170	TARBUTTON HALL	G8
1222	THE HATCHERY	G5

1249	TULL PLAZA	G8
1250	QUAD ENERGY PLANT	G8
1320	GLENN MEMORIAL CHURCH SCL	G9
1340	REHABILITATION CENTER	H7
1350	FM BLDG - B (CUST SRVCE)	G7
1360	FM BLDG - G (STORAGE)	G7
1370	1462 CLIFTON ROAD	H7
1380	WHITE HALL	G9
1400	WOODRUFF P E CENTER	G8
1402	WOODRUFF P E TRACK	G8
1403	WPEC OUTDOOR TENNIS COURTS	G7
1440	WOODRUFF HEALTH SCIENCES ADMINISTRATION	H7
1460	ANTHROPOLOGY	G8
1470	GLENN CHURCH AND AUDITOR	G9
1515	NELL HODGSON WOODRUFF NURSING	G6
1516	R. RANDALL ROLLINS BUILDING	H6
1518	GRACE CRUM ROLLINS	G6
1522	CLAUDIA NANCE ROLLINS BUILDING	G6
1525	1525 CLIFTON	H6
1535	CALLAWAY MEMORIAL CENTER	G8
1560	BOWDEN HALL	H9
1570	MICHAEL C. CARLOS HALL	G9
1571	MICHAEL C. CARLOS MUSEUM	G9
1580	CANDLER LIBRARY	G8
1599	1599 CLIFTON RD	G5
1600	EMORY HOSPITAL	H8
1610	FM BLDG - H (STEAM PLANT)	G7
1640	EMORY CONF CTR HOTEL PARKING DECK	G8
1680	MODERN LANGUAGES	G8
1707	1707 N DECATUR	H9
1710	LULLWATER HOUSE	J5
1711	LULLWATER - ESTATES	J6
1715	1715 N DECATUR	H9
1720	RICH MEMORIAL BUILDING	H9
1721	GOZUETA BUSINESS SCHOOL	H9
1722	GOZUETA FOUNDATION CENTER	G7
1751	WINSHIP CANCER INSTITUTE	H8
1752	WINSHIP CANCER CHILLER PLANT - 1751	I8
1753	CATHOLIC CENTER	I8
1784	NORTH DECATUR BUILDING	I9
1800	TELECOMMUNICATION	H8
1804	BURLINGTON RD-PERFORMING ARTS	I8
1830	CONVOCAION HALL	G9
1900	TUFT'S HOUSE	I8
1920	FM BLDG - E (RECEIVING)	F7
1923	HAZARD PAINT WASTE STORAGE	F7
1930	WOODRUFF MEMORIAL RESEARCH BLDG	H8
1940	WAYNE ROLLINS RESEARCH CENTER	G7
1941	WHITEHEAD BIOMEDICAL RESEARCH BLDG	H9
1980	ROBERT W. WOODRUFF LIBRARY	H8
1990	EUH EDUCATION ANNEX	H8
2010	1627 N. DECATUR	G10
2015	EMORY VILLAGE	G10

2020	MEDICAL SCHOOL ADMIN - 718 GATEWOOD	H6
2030	MACMILLAN - GAMBRELL HALL	H9
2040	ATWOOD CHEMISTRY CENTER	G8
2041	EMERSON HALL	G8
2043	CANDLER SCH. OF THEOL./PITTS THEOL. LIBRARY	G8
2045	PSYCHOLOGY AND INTERDISCIPLINARY SCIENCES	F8
2125	MARCUS HILLEL CENTER	H6
2150	1399 OXFORD ROAD	F9
2151	1401 OXFORD ROAD	F9
2172	EMORY CHILDREN'S CENTER	I7
2192	732 GATEWOOD RD	H6
2240	CREATIVITY AND ARTS	H10
2260	EMORY CLINIC BUILDING - B	H8
2420	MILLER-WARD ALUMNI HOUSE	I4
2422	LUCE CENTER	H5
2430	HOUSTON MILL HOUSE	H4
2431	EPC DUAL FUNCTION FACILITY	I4
2432	EPC D WING	I4
2434	EPC T-14	I4
2440	EPC MAIN BUILDING	I4
2441	EPC EYE BUILDING	I4
2444	EPC GREAT APE WING	I4
2447	IDB	I4
2448	LIVING LINKS TRAILER	I4
2449	VIROLOGY RESEARCH WING	I4
2452	SPECIMEN STORAGE	I4
2453	REPE A	I4
2454	REPE B	I4
2455	REPE C	I4
2456	REPE D	I4
2457	EPC QIF	I4
2458	CF	I4
2459	CID	I4
2461	SMALL PRIMATE WING	I4
2462	EPC T-12	I4
2479	ANIMAL SUPV TRAILER	I4
2480	EPC VACCINE RESEARCH CTR	I4
2483	EPC BEHAVY MINGT. TRAILER.	I4
2488	EPC FMD TRAILER	I4
2580	EPC NEUROSCIENCE BUILDING & IRA	I4
2581	EPC PARKING DECK	I4
3010	ALABAMA HALL	H8
3030	CLIFTON TOWER	H6
3050	DOBBS HALL	G8
3070	HARRIS HALL	H8
3080	HOPKINS HALL	H9
3091	TURMAN RESIDENCE HALL	H7
3105	EAGLE HALL	H7
3106	EAGLE HALL PARKING DECK	H7
3108	HAMILTON E. HOLMES HALL	H7
3109	ELEONORE RAOUH HALL	G7
3115	IGNATIUS FEW HALL	G7
3118	LETTIE PATE WHITEHEAD EVANS HALL	G7
3130	SMITH HALL	H9
3140	THOMAS HALL	H9
3190	WOODRUFF RESIDENTIAL CENTER	H6

3201	1762 CLIFTON PARKING	E5
3202	EGLESTON HOSPITAL PARKING DECK	I7
3203	DRUID HILLS HIGH SCHOOL	J8
3210	COX HALL	H8
3220	DOOLEY'S DENN	H7
3232	HEALTH SCIENCE RESEARCH BUILDING	H7
3235	1525 BLDG PARKING DECK	I6
3238	HEALTH SCIENCE RESEARCH BLDG. PHASE II	I7
3240	PHYSICIANS PARKING DECK	I8
3241	LOWERGATE VALET PARKING LOT	I8
3245	1599 BLDG PARKING DECK	G5
3250	LOWERGATE EAST PARKING DECK	I8
3260	FISHBURNE PARKING DECK	H9
3261	SCHWARTZ CENTER FOR PERFORMING ARTS	H8
3262	PEAVINE SOUTH PARKING LOT	F8
3263	OXFORD ROAD BUILDING	F9
3264	OXFORD ROAD PARKING DECK	G9
3270	PEAVINE SOUTH PARKING DECK	F8
3271	PEAVINE NORTH PARKING DECK	F7
3278	FM PARKING LOT	G7
3280	LOWERGATE SOUTH PARKING DECK	I9
6070	#6 EAGLE ROW	G7
6080	#8 EAGLE ROW	G7
6110	#10 EAGLE ROW	G7
6111	SORORITY VILLAGE A	G7
6112	SORORITY VILLAGE B	G7
6113	SORORITY VILLAGE C	G7
6114	SORORITY VILLAGE D	G7
6115	SORORITY VILLAGE E	G7
6116	SORORITY VILLAGE F	G7
6117	SORORITY VILLAGE G	G7
6118	SORORITY VILLAGE H	G7
6119	SORORITY VILLAGE I	G7
6120	SORORITY VILLAGE J	G7
6121	SORORITY VILLAGE MECHANICAL ROOM	G7
6122	SORORITY VILLAGE APARTMENT	F7
6123	SORORITY MAIN MECHANICAL	F7
6124	SOFTBALL LOCKER ROOM	F7
6127	SOFTBALL BATTING FACILITY	F7
6130	SOFTBALL TEAM FACILITY AND PRESS BOX	F7
6145	#15 EAGLE ROW	F7
6150	#12 EAGLE ROW	F7
6155	#13 EAGLE ROW	F7
6160	#14 EAGLE ROW	F7
6180	#17 EAGLE ROW	F7
6210	#18 EAGLE ROW	F7
6220	#20 EAGLE ROW	F7
6230	#22 EAGLE ROW	F7
6351	1635-A N DECATUR - HOUSE	G10
6352	1635-B N DECATUR - COTTAGE	G10
6500	GLENN CHURCH PARSONAGE	H10
7460	CASA EMORY	E6
7470	CAMPUS LIFE PAVILION	F6
7490	ASSURRY HOUSE	E6
7810	HAIN FOREST	H4
7901	CLIFTON SCHOOL AT CLIFTON	F5
8510	CENTER DISEASE CONTROL	G6
8760	EMORY HOTEL + CONF CNTR	G5
8761	EMORY CONF CTR PAVILION	G5